

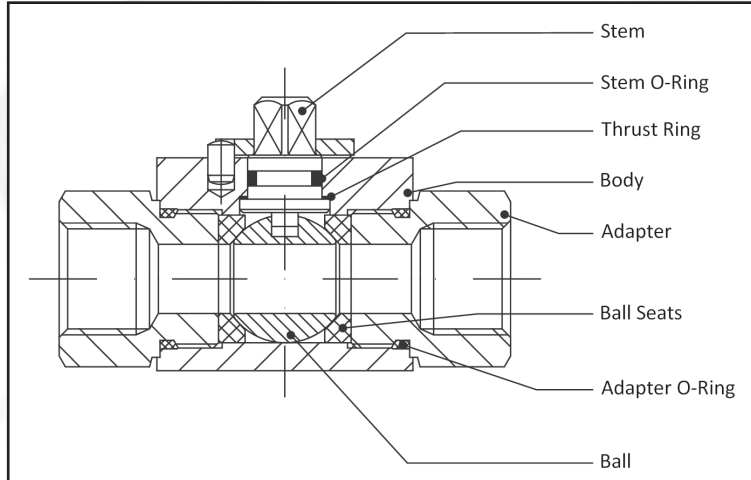
VALVES

Product	Page
Ball Valves:	68
Overview	68
BKH/SKH - 2-Way Threaded	69
BKH/SKH - 2-Way SAE Flange	70
APR - 2-Way Auto Press. Relief	71
BK3/SK3 - 3-Way Threaded	72
RKH - 2-Way High Pressure	73
HRKH - 2-Way Ultra High Pressure	74
PV2/PV3 - Code 62 Direct Mount	75
FCKH - ISO 6164 Flange	76
FCKH - SAE Code 61 Flange	77
FCKH - SAE Code 62 Flange	78
BBVF - High Press. Direct Mount	79
Accessories	80
Check Valves	81
VU - Soft Seat Threaded	81
HSP - Hard Seat Threaded	82



VALVES

Bar Hydraulics offers a wide range of hydraulic ball valves. Our large inventory of low, medium, and high pressure ball valves can be supplied as a loose component or incorporated into a Bar Hydraulics Non-Welded Piping System. Our ball valves can be supplied in sizes ranging from ¼" to 5", in carbon steel or stainless steel. All ball valve designs can be configured in NPT, SAE O-Ring BOSS, JIC, and SAE Code 61/62 flanged.



DESCRIPTION:

The Bar Hydraulics line of dependable high pressure ball valves provides full, unrestricted flow and positive shut-off of fluids under extreme service conditions. Models are available to accommodate system pressures up to 7,250 psi. Since a variety of materials are available, Bar Hydraulics valves can be used with various fluids including petroleum based oils and some water glycols.

VALVE DESIGN:

The design of these ball valves is based on the "floating ball" principle, which allows the ball to turn freely between the ball seals. A positive seal is attained by fluid pressure acting on the upstream surface of the ball and producing a constant uniform contact between the downstream ball seal and the ball. The ball is operated by a sealed spindle with a projecting square end to which the control handle or optional actuator is attached. Ball valves are intended to be used as on/off flow control devices and are not to be used to throttle fluid flow. The valves should always be either fully open or fully closed.

PRODUCT FEATURES:

- Full passage for unrestricted flow of medium
- Floating ball provides positive seal
- Direction of flow indicated by milled slot in control spindle
- Valve positioning controlled by a stop pin and limit washer
- Fluoroelastomer O-Rings (standard)
- Phosphate coated carbon steel valve body (standard)

AVAILABLE OPTIONS:

Bar Hydraulics can furnish ball valves with special options including:

- Locking devices
- Stainless steel valve bodies
- Pneumatic or electrical actuators
- Limit switch
- Offset or straight control handles
- Custom solutions upon request

BHVB-BKH/SKH SERIES HIGH PRESSURE BALL VALVES - STEEL

BAR FLARE SYSTEM

PIPE & TUBE

CLAMPS

VALVES

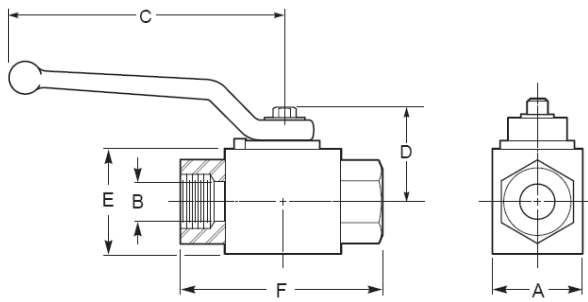
ADAPTERS

HOSES & COUPLINGS

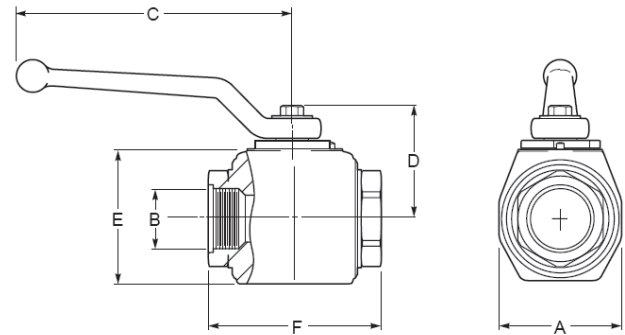
O-RINGS

BLOCKS

TOOLING



BLOCK BODY



FORGED BODY

PART NUMBER	NOM. SIZE	THREAD	WORKING PRESSURE	INCH DIMENSIONS						Weight (lbs)
				A	B	C	D	E	F	
BHVB-BKH-14-NPT-1125	¼"	¼" NPT F	7350 PSI	1.02	0.24	4.21	1.20	1.26	2.72	1.10
BHVB-BKH-14-BSP-1125	¼"	¼" BSPP								
BHVB-BKH-14-SAE-1125	¼"	#4 ORB F	7350 PSI	1.26	0.39	4.21	1.29	1.50	2.87	1.40
BHVB-BKH-38-NPT-1125	⅜"	⅜" NPT F								
BHVB-BKH-38-BSP-1125	⅜"	⅜" BSP P	7350 PSI	1.38	0.51	4.21	1.31	1.57	3.62	1.70
BHVB-BKH-38-SAE-1125	⅜"	#6 ORB F								
BHVB-BKH-12-NPT-1125	½"	½" NPT F	7350 PSI	1.93	0.79	6.50	1.91	2.24	3.82	3.10
BHVB-BKH-12-BSP-1125	½"	½" BSP P								
BHVB-BKH-12-SAE-1125	½"	#8 ORB F	5880 PSI	2.36	0.94	6.50	1.95	2.36	4.45	4.70
BHVB-BKH-34-NPT-1125	¾"	¾" NPT F								
BHVB-BKH-34-BSP-1125	¾"	¾" BSP P	5145 PSI	2.36	0.94	6.50	1.95	2.36	5.16	5.00
BHVB-BKH-34-SAE-1125	¾"	#12 ORB F								
BHVB-BKH-1-NPT-1125	1"	1" NPT F	5145 PSI	2.36	0.94	6.50	1.95	2.36	5.16	5.00
BHVB-BKH-1-BSP-1125	1"	1" BSP P								
BHVB-BKH-1-SAE-1125	1"	#16 ORB F	5145 PSI	2.36	0.94	6.50	1.95	2.36	5.16	5.00
BHVB-BKH-114-NPT-1125 *	1"	1¼" NPT F								
BHVB-BKH-114-BSP-1125 *	1"	1¼" BSP P	5145 PSI	2.36	0.94	6.50	1.95	2.36	5.16	5.00
BHVB-BKH-114-SAE-1125 *	1"	#20 ORB F								
BHVB-BKH-112-NPT-1125 *	1"	1½" NPT F	5145 PSI	2.36	0.94	6.50	1.95	2.36	5.47	5.20
BHVB-BKH-112-BSP-1125 *	1"	1½" BSP P								
BHVB-BKH-112-SAE-1125 *	1"	#24 ORB F	6175 PSI	2.99	1.26	8.30	2.60	3.30	4.50	8.30
BHVB-SKH-114-NPT-3125	1¼"	1¼" NPT F								
BHVB-SKH-114-BSP-3125	1¼"	1¼" BSP P	6175 PSI	3.27	1.50	8.30	2.73	3.62	5.30	12.50
BHVB-SKH-114-SAE-3125	1¼"	#20 ORB F								
BHVB-SKH-112-NPT-3125	1½"	1½" NPT F	6175 PSI	3.94	1.89	8.50	3.15	4.37	5.50	14.60
BHVB-SKH-112-BSP-3125	1½"	1½" BSP P								
BHVB-SKH-112-SAE-3125	1½"	#24 ORB F	6175 PSI	3.94	1.89	8.50	3.15	4.37	5.50	14.60
BHVB-SKH-2-NPT-3125	2"	2" NPT F								
BHVB-SKH-2-BSP-3125	2"	2" BSP P	6175 PSI	3.94	1.89	8.50	3.15	4.37	5.50	14.60
BHVB-SKH-2-SAE-3125	2"	#32 ORB F								

LAST 4 DIGITS: -1125 CARBON STEEL BLOCK BODY, STEEL BALL & STEM

* REDUCED TO 1" PORT

VITON O-RINGS
DELTRIN BALL SEATS

-3125 FORGED STEEL BODY, STEEL BALL & STEM

VITON O-RINGS
DELTRIN BALL SEATS

-4425 316-STAINLESS STEEL BODY, BALL & STEM

VITON O-RINGS
DELTRIN BALL SEATS

BHVB-BKH/SKH SERIES CODE 61/62 SPLIT FLANGE BALL VALVES - STEEL / STAINLESS STEEL

BAR FLARE SYSTEM

PIPE & TUBE

CLAMPS

VALVES

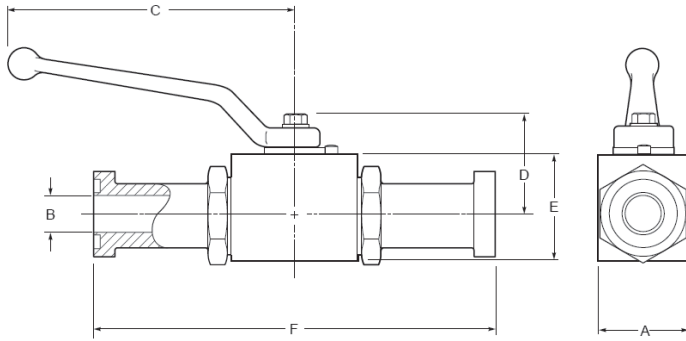
ADAPTERS

HOSES & COUPLINGS

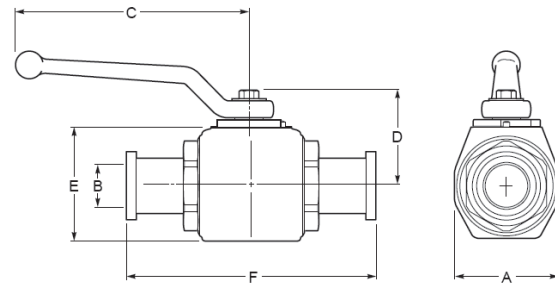
O-RINGS

BLOCKS

TOOLING



BLOCK BODY



FORGED BODY

CODE 61

PART NUMBER	NOM. SIZE	WORKING PRESSURE	INCH DIMENSIONS						Weight (lbs)
			A	B	C	D	E	F	
BHVB-BKH-13-SAE-3000-S-1125	3/8"	3000 PSI	1.37	0.49	4.21	1.32	1.57	5.95	2.10
BHVB-BKH-20-SAE-3000-S-1125	1/2"	3000 PSI	1.93	0.75	6.50	1.90	2.24	6.38	3.70
BHVB-BKH-25-SAE-3000-S-1125	1"	3000 PSI	2.36	0.95	6.50	1.95	2.36	7.00	5.50
BHVB-BKH-32-SAE-3000-S-3125	1 1/4"	3000 PSI	2.99	1.25	8.30	2.60	3.30	7.50	9.20
BHVB-SKH-40-SAE-3000-S-3125	1 1/2"	3000 PSI	3.27	1.50	8.30	2.74	3.62	9.10	15.10
BHVB-SKH-50-SAE-3000-S-3125	2"	3000 PSI	3.94	1.89	8.30	3.15	4.37	9.14	16.50

CODE 62

PART NUMBER	NOM. SIZE	WORKING PRESSURE	INCH DIMENSIONS						Weight (lbs)
			A	B	C	D	E	F	
BHVB-BKH-13-SAE-6000-S-1125	3/8"	6000 PSI	1.37	0.49	4.21	1.32	1.57	5.95	2.10
BHVB-BKH-20-SAE-6000-S-1125	1/2"	6000 PSI	1.93	0.75	6.50	1.90	2.24	6.85	3.90
BHVB-BKH-25-SAE-6000-S-1125	1"	6000 PSI	2.36	0.95	6.50	1.95	2.36	7.80	5.90
BHVB-BKH-32-SAE-6000-S-3125	1 1/4"	6000 PSI	2.99	1.25	8.30	2.60	3.30	8.78	10.10
BHVB-SKH-40-SAE-6000-S-3125	1 1/2"	6000 PSI	3.27	1.50	8.30	2.74	3.62	11.07	15.10
BHVB-SKH-50-SAE-6000-S-3125	2"	6000 PSI	3.94	1.89	8.30	3.15	4.37	12.44	20.60

- LAST 4 DIGITS:**
- 1125 CARBON STEEL BLOCK BODY, STEEL BALL & STEM
VITON O-RINGS
DELTRIN BALL SEATS
 - 3125 FORGED STEEL BODY, STEEL BALL & STEM
VITON O-RINGS
DELTRIN BALL SEATS
 - 4425 316-STAINLESS STEEL BODY, BALL & STEM
VITON O-RINGS
DELTRIN BALL SEATS

BHVB-BKH/BHVB-SKH SERIES WITH AUTOMATIC PRESSURE RELIEF - STEEL / STAINLESS STEEL

MATERIALS / SEALS / CONNECTIONS:

2-WAY BALL VALVES WITH AUTOMATIC PRESSURE RELIEF CAN BE DELIVERED IN NEARLY ALL DIMENSIONS FOR BHVB-BKH AND BHVB-SKH SERIES UPON REQUEST.

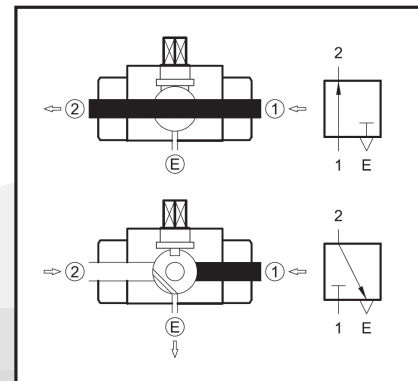
FUNCTION:

TO SEPARATE QUICK CONNECTION COUPLINGS OR TO TEST PRESSURE GAUGES. THE CONSUMER SIDE OF A SYSTEM HAS TO BE SHUT OFF AND RELIEVED. UP TO NOW THESE HAVE BEEN TWO INDEPENDENT PROCESSES WITH DIFFERENT VALVES.

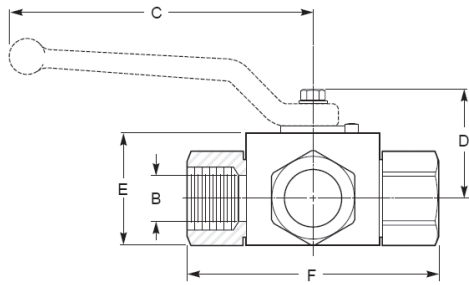
THIS TYPE OF BALL VALVE IMPLIES BOTH FUNCTIONS: SHUT OFF AND RELIEF ARE DONE SIMULTANEOUSLY. THIS SIMPLIFIES OPERATION, BECAUSE RELIEF CANNOT BE FORGOTTEN. BALL VALVES WITH AUTOMATIC RELIEF HAVE TO BE INSTALLED UNIDIRECTIONAL IN ACCORDING TO THE DIRECTION OF THE ARROW MARKED ON VALVE HOUSING.

ORDER NUMBER:

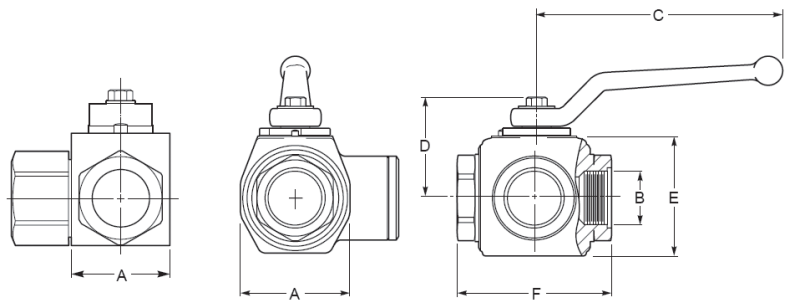
TO ORDER BALL VALVES WITH THE AUTOMATIC PRESSURE RELIEF ADD **-PR** TO THE END OF THE PART NUMBER.
e.g. BHVB-SKH-40-SAE-3000-S-3125-PR



BHVB-BK3/SK3 SERIES HIGH PRESSURE SELECTOR BALL VALVES - STEEL



BLOCK BODY

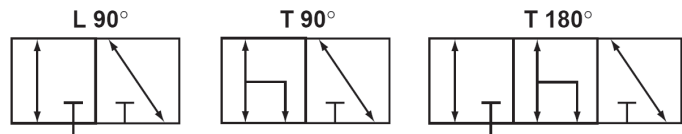


FORGED BODY

PART NUMBER	NOM. SIZE	THREAD	WORKING PRESSURE	INCH DIMENSIONS						Weight (lbs)
				A	B	C	D	E	F	
BHVB-BK3-14-NPT-1125-L	¼"	¼" NPT F	5880 PSI	1.02	0.24	4.21	1.20	1.26	2.72	1.1
BHVB-BK3-14-BSP-1125-L	¼"	¼" BSP F	5880 PSI							
BHVB-BK3-14-SAE-1125-L	¼"	#4 ORB F	5880 PSI							
BHVB-BK3-38-NPT-1125-L	⅜"	⅜" NPT F	5880 PSI	1.26	0.39	4.21	1.29	1.50	2.87	1.5
BHVB-BK3-38-BSP-1125-L	⅜"	⅜" BSP P	5880 PSI							
BHVB-BK3-38-SAE-1125-L	⅜"	#6 ORB F	5880 PSI							
BHVB-BK3-12-NPT-1125-L	½"	½" NPT F	5145 PSI	1.38	0.51	4.21	1.31	1.57	3.62	1.8
BHVB-BK3-12-BSP-1125-L	½"	½" BSP P	5145 PSI							
BHVB-BK3-12-SAE-1125-L	½"	#8 ORB F	5145 PSI							
BHVB-BK3-34-NPT-1125-L	¾"	¾" NPT F	5145 PSI	1.93	0.79	6.50	1.91	2.24	3.82	3.3
BHVB-BK3-34-BSP-1125-L	¾"	¾" BSP P	5145 PSI							
BHVB-BK3-34-SAE-1125-L	¾"	#12 ORB F	5145 PSI							
BHVB-BK3-1-NPT-1125-L	1"	1" NPT F	5145 PSI	2.36	0.94	6.50	1.95	2.36	4.45	5.2
BHVB-BK3-1-BSP-1125-L	1"	1" BSP P	5145 PSI							
BHVB-BK3-1-SAE-1125-L	1"	#16 ORB F	5145 PSI							
BHVB-SK3-114-NPT-3125-L	1¼"	1¼" NPT F	5145 PSI	2.99	1.18	8.50	2.60	3.30	4.53	11.7
BHVB-SK3-114-BSP-3125-L	1¼"	1¼" BSP P	5145 PSI							
BHVB-SK3-114-SAE-3125-L	1¼"	#20 ORB F	5145 PSI							
BHVB-SK3-112-NPT-3125-L	1½"	1½" NPT F	5145 PSI	3.27	1.37	8.30	2.73	3.62	4.81	16.1
BHVB-SK3-112-BSP-3125-L	1½"	1½" BSP P	5145 PSI							
BHVB-SK3-112-SAE-3125-L	1½"	#24 ORB F	5145 PSI							
BHVB-SK3-2-NPT-3125-L	2"	2" NPT F	5145 PSI	3.94	1.73	8.30	3.15	4.37	5.53	20.2
BHVB-SK3-2-BSP-3125-L	2"	2" BSP P	5145 PSI							
BHVB-SK3-2-SAE-3125-L	2"	#32 ORB F	5145 PSI							

- LAST 4 DIGITS:**
- 1125 CARBON STEEL BLOCK BODY,
STEEL BALL & STEM
VITON O-RINGS
DELRIN BALL SEATS
 - 3125 FORGED STEEL BODY,
STEEL BALL & STEM
VITON O-RINGS
DELRIN BALL SEATS

NOTE: The sealing function of the BHVB-BK3/SK3 standard valves is only given when the pressure standing on the closed port is less than or equal to the inlet pressure of the open port. To apply pressure to any port, a special variation is required: add "-A" to the end of the part number. Extra lead time and cost will apply.



BHVB-BK3/SK3 SERIES HIGH PRESSURE SELECTOR BALL VALVES - 316 STAINLESS

BAR FLARE SYSTEM

PIPE & TUBE

CLAMPS

VALVES

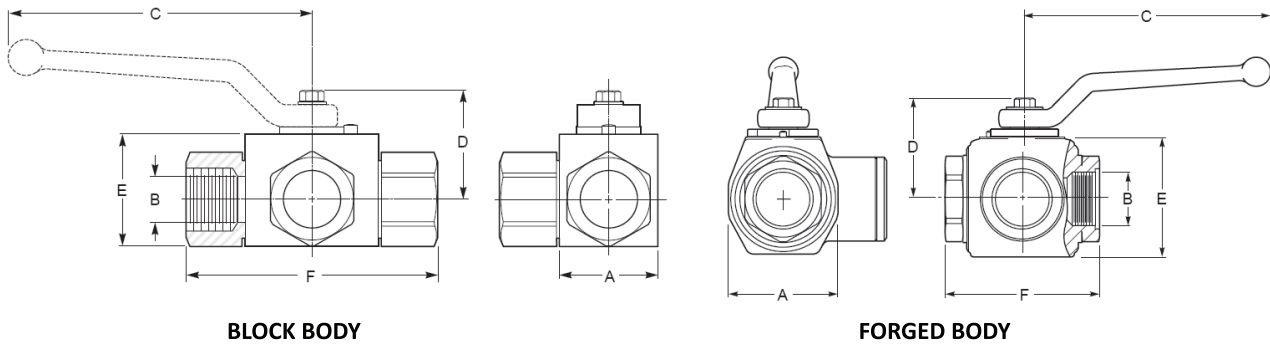
ADAPTERS

HOSES & COUPLINGS

O-RINGS

BLOCKS

TOOLING



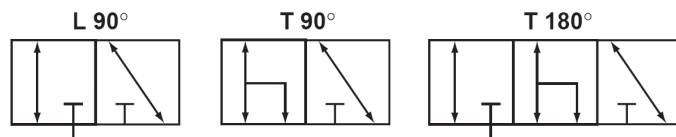
BLOCK BODY

FORGED BODY

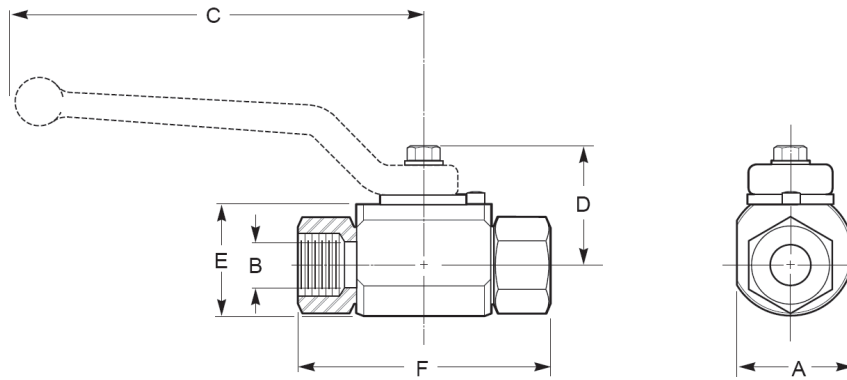
PART NUMBER	NOM. SIZE	THREAD	WORKING PRESSURE	INCH DIMENSIONS						Weight (lbs)
				A	B	C	D	E	F	
BHVB-BK3-14-NPT-4425-L	¼"	¼" NPT F	5880 PSI	2.02	0.24	4.21	1.50	1.38	2.72	1.1
BHVB-BK3-14-BSP-4425-L	¼"	¼" BSP P	5880 PSI							
BHVB-BK3-14-SAE-4425-L	¼"	#4 ORB F	5880 PSI							
BHVB-BK3-38-NPT-4425-L	⅜"	⅜" NPT F	5880 PSI	2.26	0.35	4.21	1.32	1.57	2.87	1.5
BHVB-BK3-38-BSP-4425-L	⅜"	⅜" BSP P	5880 PSI							
BHVB-BK3-38-SAE-4425-L	⅜"	#6 ORB F	5880 PSI							
BHVB-BK3-12-NPT-4425-L	½"	½" NPT F	5145 PSI	2.60	0.45	4.21	1.54	1.57	3.62	1.8
BHVB-BK3-12-BSP-4425-L	½"	½" BSP P	5145 PSI							
BHVB-BK3-12-SAE-4425-L	½"	#8 ORB F	5145 PSI							
BHVB-BK3-34-NPT-4425-L	¾"	¾" NPT F	5145 PSI	3.08	0.71	6.50	1.93	2.24	3.82	3.3
BHVB-BK3-34-BSP-4425-L	¾"	¾" BSP P	5145 PSI							
BHVB-BK3-34-SAE-4425-L	¾"	#12 ORB F	5145 PSI							
BHVB-BK3-1-NPT-4425-L	1"	1" NPT F	5145 PSI	3.27	0.87	6.50	2.03	2.56	4.45	5.2
BHVB-BK3-1-BSP-4425-L	1"	1" BSP P	5145 PSI							
BHVB-BK3-1-SAE-4425-L	1"	#16 ORB F	5145 PSI							
BHVB-SK3-114-NPT-4425-L	1¼"	1¼" NPT F	5145 PSI	3.85	1.18	8.30	2.40	3.15	4.52	11.7
BHVB-SK3-114-BSP-4425-L	1¼"	1¼" BSP P	5145 PSI							
BHVB-SK3-114-SAE-4425-L	1¼"	#20 ORB F	5145 PSI							
BHVB-SK3-112-NPT-4425-L	1½"	1½" NPT F	5145 PSI	4.32	1.38	8.30	2.64	3.54	5.43	16.1
BHVB-SK3-112-BSP-4425-L	1½"	1½" BSP P	5145 PSI							
BHVB-SK3-112-SAE-4425-L	1½"	#24 ORB F	5145 PSI							
BHVB-SK3-2-NPT-4425-L	2"	2" NPT F	5145 PSI	4.92	1.73	8.30	3.03	4.72	5.51	20.2
BHVB-SK3-2-BSP-4425-L	2"	2" BSP P	5145 PSI							
BHVB-SK3-2-SAE-4425-L	2"	#32 ORB F	5145 PSI							

LAST 4 DIGITS: -4425 316 - STAINLESS STEEL BODY,
BALL & STEM
VITON O-RINGS
DELTRIN BALL SEATS

NOTE: The sealing function of the BHVB-BK3/SK3 standard valves is only given when the pressure standing on the closed port is less than or equal to the inlet pressure of the open port. To apply pressure to any port, a special variation is required: add "-A" to the end of the part number. Extra lead time and cost will apply.



BHVB-RKH SERIES HIGH PRESSURE BALL VALVES - 316 STAINLESS



PART NUMBER	NOM. SIZE	THREAD	WORKING PRESSURE	INCH DIMENSIONS						Weight (lbs)
				A	B	C	D	E	F	
BHVB-RKH-14-NPT-4425	1/4"	1/4" NPT F	5880 PSI	1.38	0.24	4.21	1.2	1.25	2.72	0.7
BHVB-RKH-14-BSP-4425	1/4"	1/4" BSP P	5880 PSI							
BHVB-RKH-14-SAE-4425	1/4"	#4 ORB F	5880 PSI							
BHVB-RKH-38-NPT-4425	3/8"	3/8" NPT F	5880 PSI	1.38	0.31	4.21	1.2	1.25	2.87	1.1
BHVB-RKH-38-BSP-4425	3/8"	3/8" BSP P	5880 PSI							
BHVB-RKH-38-SAE-4425	3/8"	#6 ORB F	5880 PSI							
BHVB-RKH-12-NPT-4425	1/2"	1/2" NPT F	5880 PSI	1.65	0.51	4.21	1.29	1.49	3.62	1.4
BHVB-RKH-12-BSP-4425	1/2"	1/2" BSP P	5880 PSI							
BHVB-RKH-12-SAE-4425	1/2"	#8 ORB F	5880 PSI							
BHVB-RKH-34-NPT-4425	3/4"	3/4" NPT F	5880 PSI	1.77	0.79	6.5	1.33	1.57	3.82	3.3
BHVB-RKH-34-BSP-4425	3/4"	3/4" BSP P	5880 PSI							
BHVB-RKH-34-SAE-4425	3/4"	#12 ORB F	5880 PSI							
BHVB-RKH-1-NPT-4425	1"	1" NPT F	5880 PSI	1.97	0.94	6.5	1.69	1.81	4.45	4.4
BHVB-RKH-1-BSP-4425	1"	1" BSP P	5880 PSI							
BHVB-RKH-1-SAE-4425	1"	#16 ORB F	5880 PSI							
BHVB-RKH-114-NPT-4425	1 1/4"	1 1/4" NPT F	5145 PSI	3.54	1.25	8.3	2.59	3.3	6.54	8.3
BHVB-RKH-114-BSP-4425	1 1/4"	1 1/4" BSP P	5145 PSI							
BHVB-RKH-114-SAE-4425	1 1/4"	#20 ORB F	5145 PSI							
BHVB-RKH-112-NPT-4425	1 1/2"	1 1/2" NPT F	5145 PSI	3.26	1.49	8.3	2.73	3.62	7.14	13.4
BHVB-RKH-112-BSP-4425	1 1/2"	1 1/2" BSP P	5145 PSI							
BHVB-RKH-112-SAE-4425	1 1/2"	#24 ORB F	5145 PSI							
BHVB-RKH-2-NPT-4425	2"	2" NPT F	5145 PSI	3.94	1.89	8.5	3.15	4.37	9.3	20.1
BHVB-RKH-2-BSP-4425	2"	2" BSP P	5145 PSI							
BHVB-RKH-2-SAE-4425	2"	#32 ORB F	5145 PSI							

CONSTRUCTION: 316 - STAINLESS STEEL BODY, BALL AND STEM
 VITON O-RINGS
 DELRIN BALL SEATS
 FULL PORT

BAR FLARE SYSTEM

PIPE & TUBE

CLAMPS

VALVES

ADAPTERS

HOSES & COUPLINGS

O-RINGS

BLOCKS

TOOLING

BHVB-HRKH SERIES ULTRA HIGH PRESSURE BALL VALVES - STEEL / STAINLESS

BAR FLARE
SYSTEM

PIPE & TUBE

CLAMPS

VALVES

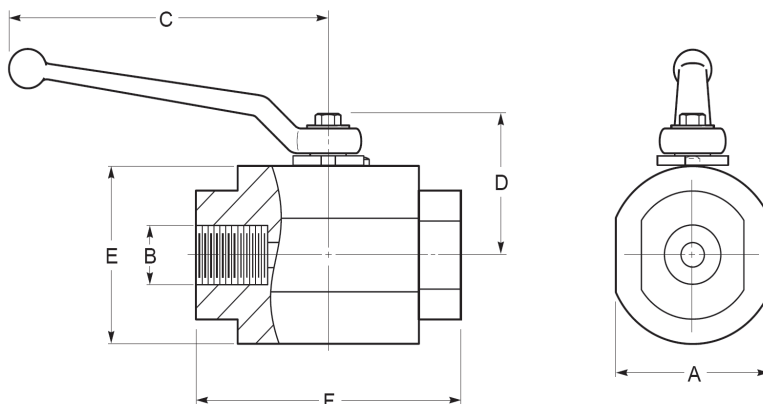
ADAPTERS

HOSES &
COUPLINGS

O-RINGS

BLOCKS

TOOLING



STEEL

PART NUMBER	NOMINAL SIZE	THREAD	WORKING PRESSURE	INCH DIMENSIONS						Weight (lbs)
				A	B	C	D	E	F	
BHVB-HRKH-14-NPT-3923	½"	¼" NPT F	11,760 PSI	2.13	0.24	4.21	1.61	2.76	3.54	3.52
BHVB-HRKH-38-NPT-3923	½"	⅜" NPT F	11,760 PSI							
BHVB-HRKH-12-NPT-3923	½"	½" NPT F	11,760 PSI	2.91	0.51	6.49	2.2	3.76	4.33	6.83
BHVB-HRKH-34-NPT-3923	¾"	¾" NPT F	11,760 PSI							
BHVB-HRKH-1-NPT-3923	1"	1" NPT F	11,760 PSI	3.54	0.67	6.49	2.5	4.35	4.72	11.59
BHVB-HRKH-114-NPT-3923	1½"	1¼" NPT F	11,760 PSI	3.54	0.67	6.49	2.5	4.35	4.72	19.90

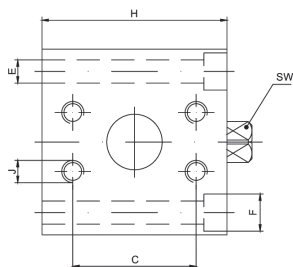
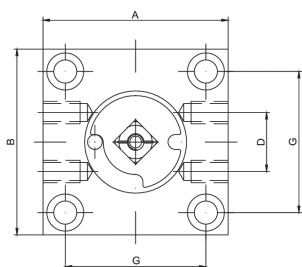
CONSTRUCTION: STEEL BODY, BALL & STEM
 BUNA O-RINGS
 DELRIN BALL SEATS
 REDUCED PORTS ½" - 1¼"

316 STAINLESS STEEL

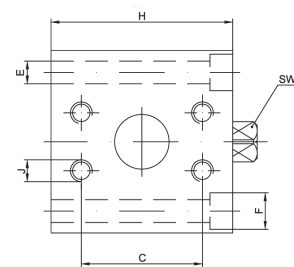
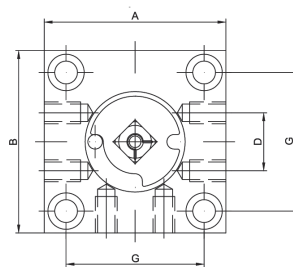
PART NUMBER	NOMINAL SIZE	THREAD	WORKING PRESSURE	INCH DIMENSIONS						Weight (lbs)
				A	B	C	D	E	F	
BHVB-HRKH-14-NPT-4425	¼"	¼" NPT F	9,600 PSI	1.83	0.24	4.21	1.41	2.38	3.78	3.85
BHVB-HRKH-38-NPT-4425	⅜"	⅜" NPT F	11,760 PSI	2.13	0.35	4.21	1.61	2.76	3.54	3.85
BHVB-HRKH-12-NPT-4425	½"	½" NPT F	11,760 PSI	2.13	0.35	4.21	1.61	2.76	3.54	3.85
BHVB-HRKH-34-NPT-4425	¾"	¾" NPT F	10,290 PSI	2.91	0.51	6.49	2.2	3.76	4.33	7.05
BHVB-HRKH-1-NPT-4425	1"	1" NPT F	11,760 PSI	3.54	0.67	6.49	2.5	4.35	4.72	11.59
BHVB-HRKH-114-NPT-4425	1½"	1¼" NPT F	9,600 PSI	3.54	0.67	6.49	2.5	4.35	4.72	19.90

CONSTRUCTION: STEEL BODY, BALL & STEM
 BUNA O-RINGS
 DELRIN BALL SEATS
 REDUCED PORTS ½" - 1¼"

BHVB-PV2/PV3 SERIES 4-BOLT DIRECT MOUNT - CODE 62 - BALL VALVES - STEEL



2-WAY

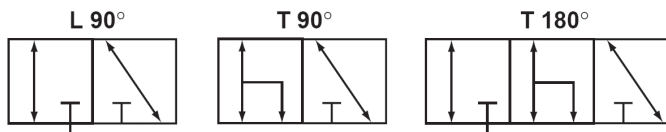


3-WAY

PART NUMBER	NOMINAL SIZE	WORKING PRESSURE	PORTING	INCH DIMENSIONS						BOLT J	Weight (lbs)
				A	B	C	H	H1	H2		
BHVB-PV2-13-SAE-6000	½"	6000 PSI	2-WAY	2.36	2.36	1.59	0.72	0.59	1.69	M8	2.84
BHVB-PV3-13-SAE-6000	½"	6000 PSI	3-WAY								
BHVB-PV2-20-SAE-6000	¾"	6000 PSI	2-WAY	3.15	3.15	2.00	0.94	0.71	2.36	M10	4.39
BHVB-PV3-20-SAE-6000	¾"	6000 PSI	3-WAY								
BHVB-PV2-25-SAE-6000	1"	6000 PSI	2-WAY	3.70	3.70	2.25	1.09	0.71	2.76	M12	6.57
BHVB-PV3-25-SAE-6000	1"	6000 PSI	3-WAY								
BHVB-PV2-32-SAE-6000	1½"	6000 PSI	2-WAY	3.94	3.94	2.63	1.25	0.79	2.99	M14	12.80
BHVB-PV3-32-SAE-6000	1½"	6000 PSI	3-WAY								
BHVB-PV2-40-SAE-6000	1½"	6000 PSI	2-WAY	4.33	4.33	3.13	1.44	0.79	3.31	M16	20.94
BHVB-PV3-40-SAE-6000	1½"	6000 PSI	3-WAY								
BHVB-PV2-50-SAE-6000	2"	6000 PSI	2-WAY	5.12	5.12	3.81	1.75	0.79	4.25	M20	24.47
BHVB-PV3-50-SAE-6000	2"	6000 PSI	3-WAY								

CONSTRUCTION: STEEL BODY, BALL & STEM
 BUNA O-RINGS
 DELRIN BALL SEATS

PORTING CONFIGURATIONS: The sealing function of PV3-standard valves is only given when the pressure standing on the closed port is zero or if the pressure between the connected ports is higher than the pressure on the closed port. To apply **pressure from all ports** (PN1 = PN2), a special variant is required. Add "-A" to the order code.



BAR FLARE SYSTEM

PIPE & TUBE

CLAMPS

VALVES

ADAPTERS

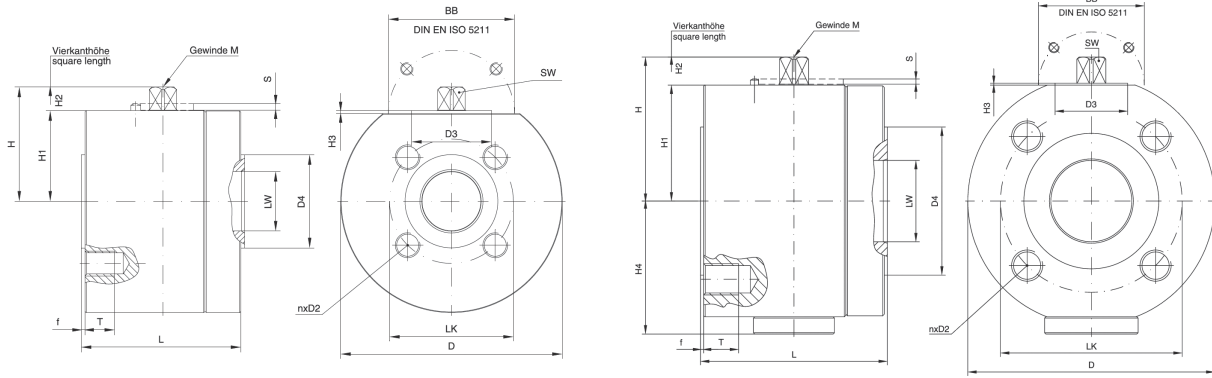
HOSES & COUPLINGS

O-RINGS

BLOCKS

TOOLING

BHVB-FCKH SERIES FLANGED-WAFER STYLE BALL VALVES STEEL / STAINLESS ISO 6164



VERSION A (2")

VERSION B (2½" - 4")

PART NUMBER	NOMINAL SIZE	WORKING MATERIAL	PRESSURE	WEIGHT (lbs)
BHVB-FCKH-DN50-250-ISO 6164-34231	2"	STEEL	3625 PSI	13.2
BHVB-FCKH-DN50-250-ISO 6164-4425	2"	STAINLESS STEEL		
BHVB-FCKH-DN50-400-ISO 6164-34231	2"	STEEL	5800 PSI	25.52
BHVB-FCKH-DN50-400-ISO 6164-4425	2"	STAINLESS STEEL		
BHVB-FCKH-DN65-250-ISO 6164-39231	2½"	STEEL	3625 PSI	35.64
BHVB-FCKH-DN65-250-ISO 6164-4925	2½"	STAINLESS STEEL		
BHVB-FCKH-DN65-320-ISO 6164-39231	2½"	STEEL	4640 PSI	54.78
BHVB-FCKH-DN65-320-ISO 6164-4925	2½"	STAINLESS STEEL		
BHVB-FCKH-DN80-250-ISO 6164-39231	3"	STEEL	3625 PSI	67.1
BHVB-FCKH-DN80-250-ISO 6164-4925	3"	STAINLESS STEEL		
BHVB-FCKH-DN80-320-ISO 6164-39231	3"	STEEL	4640 PSI	68.2
BHVB-FCKH-DN80-320-ISO 6164-4925	3"	STAINLESS STEEL		
BHVB-FCKH-DN100-250-ISO 6164-39231	4"	STEEL	3625 PSI	121
BHVB-FCKH-DN100-250-ISO 6164-4925	4"	STAINLESS STEEL		
BHVB-FCKH-DN100-320-ISO 6164-39231	4"	STEEL	4640 PSI	193.6
BHVB-FCKH-DN100-320-ISO 6164-4925	4"	STAINLESS STEEL		

VERSION A DIMENSIONS

SIZE	LW	L	D	H	H1	H2	H3	H4	S	SW	n (QTY)	D2	T	LK	DIN/ISO 5211	M	f	D4
2"*	1.87"	4.25"	7.87"	3.61"	3.07"	0.73"	0.12"	-	0.20"	0.67"	4	M20	1.22"	4.65"	F10	M10	0.01"	6.65"

* EQUIVALENT TO FLANGE ISO - DIN 56

VERSION B DIMENSIONS

SIZE	LW	L	D	H	H1	H2	H3	H4	S	SW	n (QTY)	D2	T	LK	DIN/ISO 5211	M	f	D4
2½"	2.48"	7.87"	9.84"	5.45"	4.40"	1.02"	0.08"	5.53"	0.19"	0.86"	4	M24	1.18"	5.71"	F10	M10	0.01"	4.33"
3"	2.95"	7.87"	10.55"	6.19"	5.01"	1.14"	0.08"	5.86"	0.19"	1.06"	4	M30	1.89"	6.89"	F10	M12	0.01"	5.12"
4"*	3.74"	11.02"	12.91"	7.46"	6.14"	1.28"	-	6.50"	0.19"	1.06"	8	M24	1.26"	7.87"	F12	M12	0.01"	5.90"

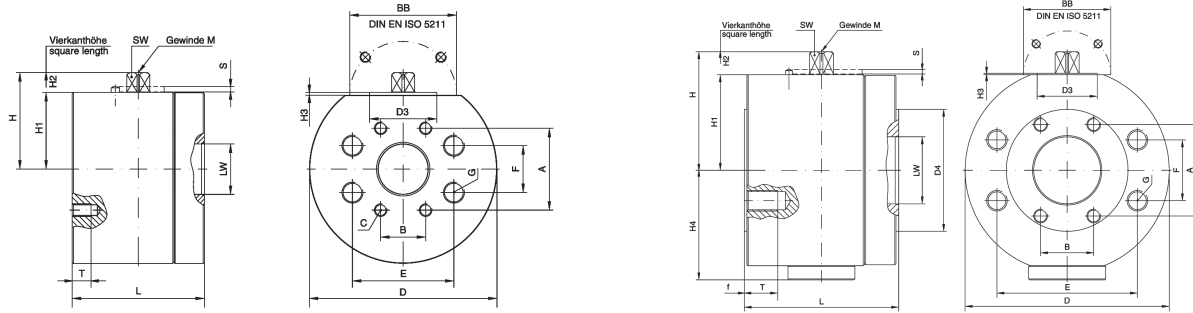
* DIFFERENT FROM ISO STANDARD.

CONTACT FACTORY FOR DETAILS

CONSTRUCTION:

LAST 4/5 DIGITS:	DESCRIPTION:
-34231	CARBON STEEL BLOCK BODY, STEEL BALL AND STEM DELTRIN BALL SEATS, BUNA-N O-RINGS, ZINC YELLOW PLATED
-39231	CARBON STEEL BODY, TRUNION AND STEM DELTRIN BALL SEATS, BUNA-N O-RINGS, ZINC YELLOW PLATED
-4925	316-STAINLESS STEEL BODY, BALL/TRUNION AND STEM VITON O-RINGS

BHVB-FCKH SERIES FLANGED-WAFER STYLE BALL VALVES STEEL / STAINLESS SAE CODE 61



SAE 3000 (CODE 61)

PART NUMBER	NOMINAL SIZE	WORKING MATERIAL	PRESSURE	WEIGHT (lbs)
BHVB-FCKH-DN25-SAE-3000-3123	1"	STEEL	4567 PSI	13.2
BHVB-FCKH-DN25-SAE-3000-4425	1"	STAINLESS STEEL		
BHVB-FCKH-DN32-SAE-3000-3123	1¼"	STEEL	3625 PSI	25.52
BHVB-FCKH-DN32-SAE-3000-4425	1¼"	STAINLESS STEEL		
BHVB-FCKH-DN40-SAE-3000-3123	1½"	STEEL	2900 PSI	35.64
BHVB-FCKH-DN40-SAE-3000-4425	1½"	STAINLESS STEEL		
BHVB-FCKH-DN50-SAE-3000-3123	2"	STEEL	2900 PSI	54.78
BHVB-FCKH-DN50-SAE-3000-4425	2"	STAINLESS STEEL		
BHVB-FCKH-DN65-SAE-3000-3923	2½"	STEEL	2320 PSI	67.1
BHVB-FCKH-DN65-SAE-3000-4925	2½"	STAINLESS STEEL		
BHVB-FCKH-DN80-SAE-3000-3923	3"	STEEL	1450 PSI	68.2
BHVB-FCKH-DN80-SAE-3000-4925	3"	STAINLESS STEEL		
BHVB-FCKH-DN100-SAE-3000-3923	4"	STEEL	365 PSI	121
BHVB-FCKH-DN100-SAE-3000-4925	4"	STAINLESS STEEL		
BHVB-FCKH-DN125-SAE-3000-3923	5"	STEEL	365 PSI	193.6
BHVB-FCKH-DN125-SAE-3000-4925	5"	STAINLESS STEEL		

SAE 3000 (CODE 61) DIMENSIONS

SIZE	LW	L	D	H	H1	H2	H3	H4	S	SW	A	B	C	T	BB ISO	D3	D4	M
1"	0.95"	3.50"	4.68"	2.45"	1.75"	0.59"	0.26"	-	0.15"	0.55"	2.06"	1.03"	3/8-16	0.59"	F07	2.16"	-	M6
1¼"	1.25"	4.48"	5.47"	3.14"	2.29"	0.72"	0.07"	-	0.19"	0.67"	2.31"	1.18"	7/16-14	0.63"	F05	1.37"	-	M8
1½"	1.49"	4.48"	6.26"	3.32"	2.47"	0.72"	0.07"	-	0.19"	0.67"	2.75"	1.41"	1/2-13	0.59"	F05	1.37"	-	M8
2"	1.87"	4.96"	7.05"	3.61"	2.76"	0.72"	0.07"	-	0.19"	0.67"	3.06"	1.68"	1/2-13	0.70"	F05	1.37"	-	M8
2½"	2.48"	6.49"	8.60"	4.83"	3.99"	0.72"	0.07"	4.64"	0.19"	0.75"	3.50"	2.00"	1/2-13	0.59"	F07	2.16"	4.56"	M8
3"	2.99"	7.48"	9.37"	5.43"	4.37"	1.02"	0.07"	5.01"	0.19"	0.86"	4.19"	2.43"	5/8-11	0.86"	F10	2.75"	5.59"	M8
4"	3.93"	8.97"	10.90"	6.43"	5.17"	1.22"	0.07"	5.96"	0.19"	1.06"	5.12"	3.06"	5/8-11	0.86"	F10	2.75"	6.77"	M12
5"	4.72"	10.98"	12.52"	7.71"	5.82"	1.30"	0.51"	7.01"	0.23"	1.06"	6.00"	3.62"	5/8-11	0.86"	F14	3.93"	7.71"	M12

BAR FLARE SYSTEM

PIPE & TUBE

CLAMPS

VALVES

ADAPTERS

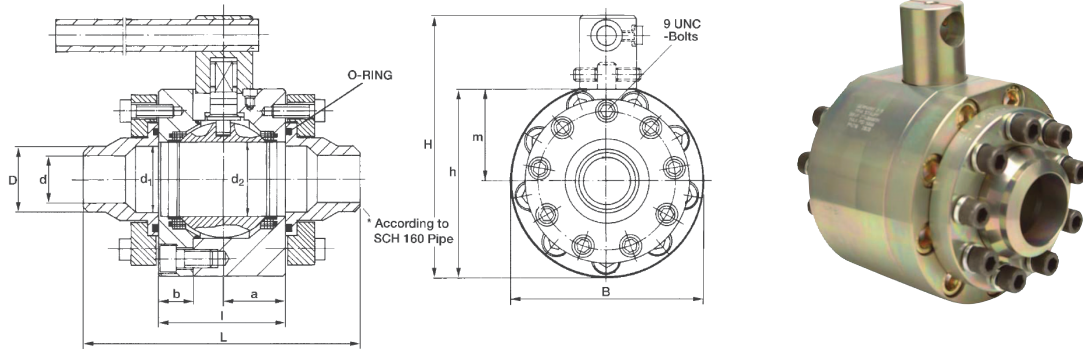
HOSES & COUPLINGS

O-RINGS

BLOCKS

TOOLING

BHVB-BBVF SERIES HIGH PRESSURE DIRECT MOUNT BALL VALVES - STEEL



PART NUMBER	NOMINAL SIZE	WORKING MATERIAL	PRESSURE	WEIGHT (lbs)
BHVB-BBVF-2764-0001-M	4"	STEEL	4000 PSI	155
BHVB-BBVF-2780-0001-M	5"	STEEL	3860 PSI	257

DIMENSIONS

SIZE	D	d	d1	d2	a	b	l	L	H	h	m	B	SCREW
4"	4.50"	3.43"	3.85"	3.93"	3.34"	1.77"	6.69"	12.99"	12.83"	9.88"	4.80"	10.51"	¾" x 1 ¼"
5"	5.56"	4.31"	4.74"	4.64"	4.13"	1.88"	8.26"	14.56"	15.00"	11.31"	5.51"	11.61"	¾" x 2 ¼"

CONSTRUCTION: STEEL BODY, BALL & STEM
 VITON O-RINGS
 DELRIN BALL SEATS

BAR FLARE
SYSTEM

PIPE & TUBE

CLAMPS

VALVES

ADAPTERS

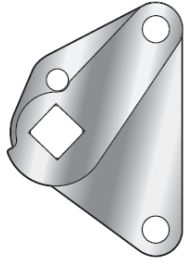
HOSES &
COUPLINGS

O-RINGS

BLOCKS

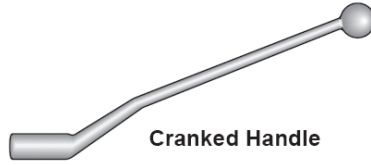
TOOLING

HIGH PRESSURE BALL VALVE ACCESSORIES



Handle Lock-Out

STEEL AND STAINLESS



Cranked Handle

STEEL AND STAINLESS



Flat Handle

RED ALUMINUM

COMPLETE BALL SEAT AND O-RING REPLACEMENT KITS

DELTRIN BALL SEATS - BUNA-N O-RINGS

PART #	REBUILDS
BHVB-BKH-14-KIT-1123	BHVB-RKH-BKH-BK3 / ¼"
BHVB-BKH-38-KIT-1123	BHVB-RKH-BKH-BK3 / ¾"
BHVB-BKH-12-KIT-1123	BHVB-RKH-BKH-BK3 / ½"
BHVB-BKH-34-KIT-1123	BHVB-RKH-BKH-BK3 / ¾"
BHVB-BKH-1-KIT-1123	BHVB-RKH-BKH-BK3 / 1" - 1½"
BHVB-SKH-114-KIT-1123	BHVB-RKH-SKH-SK3 / 1¼"
BHVB-SKH-112-KIT-1123	BHVB-RKH-SKH-SK3 / 1½"
BHVB-SKH-2-KIT-1123	BHVB-RKH-SKH-SK3 / 2"

DELTRIN BALL SEATS - VITON O-RINGS

PART #	REBUILDS
BHVB-BKH-14-KIT-1125	BHVB-RKH-BKH-BK3 / ¼"
BHVB-BKH-38-KIT-1125	BHVB-RKH-BKH-BK3 / ¾"
BHVB-BKH-12-KIT-1125	BHVB-RKH-BKH-BK3 / ½"
BHVB-BKH-34-KIT-1125	BHVB-RKH-BKH-BK3 / ¾"
BHVB-BKH-1-KIT-1125	BHVB-RKH-BKH-BK3 / 1" - 1½"
BHVB-SKH-114-KIT-1125	BHVB-RKH-SKH-SK3 / 1¼"
BHVB-SKH-112-KIT-1125	BHVB-RKH-SKH-SK3 / 1½"
BHVB-SKH-2-KIT-1125	BHVB-RKH-SKH-SK3 / 2"

HANDLE ACCESSORIES AND REPLACEMENTS

HANDLES

PART #	DESCRIPTION
BHVB-SW-09-S	STEEL CRANKED HANDLE ¼" - ½"
BHVB-SW-09-A	ALUMINUM FLAT HANDLE ¼" - ½"
BHVB-SW-09-SS	STAINLESS CRANKED HANDLE ¼" - ½"
BHVB-SW-12-S	STEEL CRANKED HANDLE ¾"
BHVB-SW-12-A	ALUMINUM FLAT HANDLE ¾"
BHVB-SW-12-SS	STAINLESS CRANKED HANDLE ¾"
BHVB-SW-14-S	STEEL CRANKED HANDLE ¾" - 1"
BHVB-SW-14-A	ALUMINUM FLAT HANDLE ¾" - 1"
BHVB-SW-14-SS	STAINLESS CRANKED HANDLE ¾" - 1"
BHVB-SW-17-S	STEEL CRANKED HANDLE 1¼" - 2"
BHVB-SW-17-A	ALUMINUM FLAT HANDLE 1¼" - 2"
BHVB-SW-17-SS	STAINLESS CRANKED HANDLE 1¼" - 2"

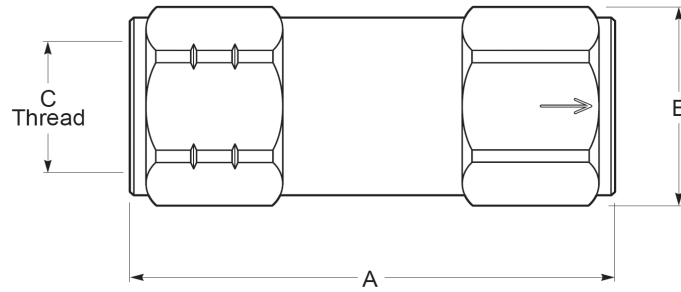
HANDLE STOP PLATES

PART #	DESCRIPTION
BHVB-SP-09	STOP PLATE FOR BKH/BK3/RKH ¼" - ½"
BHVB-SP-12	STOP PLATE FOR BK3 ¾" - ½"
BHVB-SP-14	STOP PLATE FOR BKH/BK3/RKH ¾" - 1"
BHVB-SP-17	STOP PLATE FOR SKH/SK3/RKH 1¼" - 2"

HANDLE LOCK-OUT KITS

PART #	DESCRIPTION
BHVB-LK-1	STEEL LOCK-OUT FOR BKH/BK3/RKH ¼" - ½"
BHVB-LK-1-SS	STAINLESS LOCK-OUT FOR BKH/BK3/RKH ¼" - ½"
BHVB-LK-2	STEEL LOCK-OUT FOR BKH/BK3/RKH ¾" - 1¼"
BHVB-LK-2-SS	STAINLESS LOCK-OUT FOR BKH/BK3/RKH ¾" - 1"
BHVB-LK-3	STEEL LOCK-OUT FOR SKH/SK3/RKH 1¼" - 2"
BHVB-LK-3-SS	STAINLESS LOCK-OUT FOR SKH/SK3/RKH 1¼" - 2"

BHVB-VU SERIES SOFT SEAT IN-LINE CHECK VALVES - STEEL



PART NUMBER	NOM. SIZE	WORKING PRESSURE	THREAD 'C'	CRACK PRESS.	FLOW (GPM)	A	B (HEX)	WEIGHT (lbs)
BHVB-VU-14-F-7	¼"	10,000 PSI	¼" NPT F	7 PSI	5.8	1.97"	0.75"	0.44
BHVB-VU-14-F-70				70 PSI				
BHVB-VU-38-F-7	⅜"	10,000 PSI	⅜" NPT F	7 PSI	9.47	2.36"	0.91"	0.88
BHVB-VU-38-F-70				70 PSI				
BHVB-VU-12-F-7	½"	7,350 PSI	½" NPT F	7 PSI	17.9	2.76"	1.06"	1.54
BHVB-VU-12-F-70				70 PSI				
BHVB-VU-34-F-7	¾"	7,350 PSI	¾" NPT F	7 PSI	29.7	3.39"	1.38"	2.64
BHVB-VU-34-F-70				70 PSI				
BHVB-VU-1-F-7	1"	7,350 PSI	1" NPT F	7 PSI	35.8	3.94"	1.62"	4.40
BHVB-VU-1-F-70				70 PSI				
BHVB-VU-114-F-7	1¼"	4,410 PSI	1¼" NPT F	7 PSI	59.7	5.12"	2.16"	7.26
BHVB-VU-114-F-70				70 PSI				
BHVB-VU-112-F-7	1½"	4,410 PSI	1½" NPT F	7 PSI	90.8	5.31"	2.56"	9.24
BHVB-VU-112-F-70				70 PSI				
BHVB-VU-2-F-7	2"	4,410 PSI	2" NPT F	7 PSI	144.7	5.91"	2.95"	15.84
BHVB-VU-2-F-70				70 PSI				

CONSTRUCTION: CARBON STEEL BODY AND VALVE - ZINC PLATED
 STAINLESS STEEL SPRINGS
 BUNA-N POPPET O-RINGS

BAR FLARE SYSTEM

PIPE & TUBE

CLAMPS

VALVES

ADAPTERS

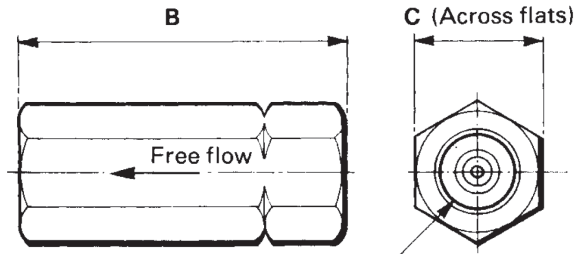
HOSES & COUPLINGS

O-RINGS

BLOCKS

TOOLING

BHVB-HSP SERIES HARD SEAT IN-LINE CHECK VALVES - STEEL



(A) FEMALE THREAD BOTH ENDS

PART NUMBER	NOMINAL SIZE	WORKING PRESSURE	THREAD 'C'	CRACK PRESS.	FLOW (GPM)	A	B (HEX)	WEIGHT (lbs)
BHVB-HSP-1000-2-5	¼"	6,000 PSI	¼" NPT F	5 PSI	6	2.44"	0.87"	0.24
BHVB-HSP-1000-2-65				65 PSI				
BHVB-HSP-1001-4-5	¼"	6,000 PSI	#4 ORB F	5 PSI	6	2.44"	0.87"	0.24
BHVB-HSP-1001-4-65				65 PSI				
BHVB-HSP-1000-3-5	¾"	6,000 PSI	¾" NPT F	5 PSI	9.5	2.87"	0.95"	0.48
BHVB-HSP-1000-3-65				65 PSI				
BHVB-HSP-1001-6-5	¾"	6,000 PSI	#6 ORB F	5 PSI	9.5	2.87"	0.95"	0.48
BHVB-HSP-1001-6-65				65 PSI				
BHVB-HSP-1000-4-5	½"	5,000 PSI	½" NPT F	5 PSI	18	3.50"	1.14"	0.64
BHVB-HSP-1000-2-65				65 PSI				
BHVB-HSP-1001-8-5	½"	5,000 PSI	#8 ORB F	5 PSI	18	3.50"	1.14"	0.64
BHVB-HSP-1001-8-65				65 PSI				
BHVB-HSP-1000-6-5	¾"	5,000 PSI	¾" NPT F	5 PSI	30	4.25"	1.50"	1.03
BHVB-HSP-1000-6-65				65 PSI				
BHVB-HSP-1001-12-5	¾"	5,000 PSI	#12 ORB F	5 PSI	30	4.25"	1.50"	1.03
BHVB-HSP-1001-12-65				65 PSI				
BHVB-HSP-1000-8-5	1"	5,000 PSI	1" NPT F	5 PSI	35	5.12"	1.69"	2
BHVB-HSP-1000-8-65				65 PSI				
BHVB-HSP-1001-16-5	1"	5,000 PSI	#16 ORB F	5 PSI	35	5.12"	1.69"	2
BHVB-HSP-1001-16-65				65 PSI				
BHVB-HSP-1000-10-5	1¼"	3,000 PSI	1¼" NPT F	5 PSI	60	5.56"	2.40"	2.71
BHVB-HSP-1000-10-65				65 PSI				
BHVB-HSP-1001-20-5	1¼"	3,000 PSI	#20 ORB F	5 PSI	60	5.56"	2.40"	2.71
BHVB-HSP-1001-20-65				65 PSI				
BHVB-HSP-1000-12-5	1½"	3,000 PSI	1½" NPT F	5 PSI	90	5.56"	2.56"	4.97
BHVB-HSP-1000-12-65				65 PSI				
BHVB-HSP-1001-24-5	1½"	3,000 PSI	#24 ORB F	5 PSI	90	5.56"	2.56"	4.97
BHVB-HSP-1001-24-65				65 PSI				
BHVB-HSP-1000-16-5	2"	3,000 PSI	2" NPT F	5 PSI	145	7.91"	3.15"	9.86
BHVB-HSP-1000-16-65				65 PSI				

CONSTRUCTION: CARBON STEEL BODY
 BLACK OXIDE COATING
 METAL SEAT FOR CORROSIVE FLUIDS

BAR FLARE SYSTEM

PIPE & TUBE

CLAMPS

VALVES

ADAPTERS

HOSES & COUPLINGS

O-RINGS

BLOCKS

TOOLING